

# REGION 3

## anchor updates

### ANCHOR WELCOME

It is amazing to think that we are entering into the last month of DY4. September is here! That means that October reporting is just around the corner. We hope the helpful hints in this edition are useful and remember we will have one Region-wide call (October 21st) prior to reporting. We will be happy to answer questions as you prepare to report. As we enter into the final demonstration year it is important to remember that great work continues as evidenced by Houston Methodist's Behavioral Health Transition of Care project. Hopefully, you were also able to experience some of the great content from the Second Annual DSRIP Statewide Learning Collaborative Summit held in August. If not, check out the HHSC website for presentations and recordings. We can't talk about September 2015 without mentioning Waiver Renewal. The application is due to CMS on September 30th and HHSC did a wonderful job reviewing application components at the Summit. As more information is available, we will share it broadly. Please keep the faith, keep up the great work and always keep the feedback coming on how the Anchor can best support you. Here is to cooler weather and a great DY5!



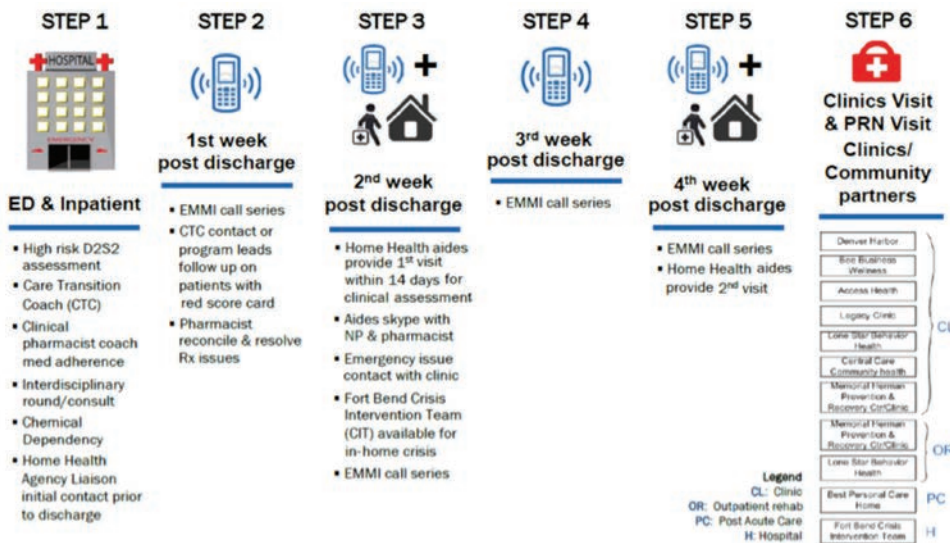
### PROJECT SPOTLIGHT

#### Houston Methodist Hospital



Houston Methodist has a Behavioral Health Transition of Care DSRIP project at three Houston Methodist locations - Houston Methodist, San Jacinto and Willowbrook. The program is designed to identify patients with primary and secondary psychiatric symptoms who may be at high risk for a 30-day readmission or ED visit. The Methodist program is delivered through a two-phase approach. Phase I takes place in the hospital. In the EDs, acute care, and psychiatric units, RNs screen patients with the Discharge Decision Support System (D2S2) tool. Phase II is post-discharge and includes phone outreach and home visits. EMMI Solutions offers a month long series of calls after patients are home. An automated system asks questions about mood, symptoms, medication compliance, and follow-up appointments. If responses trigger flags, medical team members call the patient. The assessment allows the team to determine urgency and appropriate intervention.

To view the entire article, [CLICK HERE](#)



### DSRIP Statewide Learning Collaborative Summit

On August 27th and August 28th Providers across the state convened in Austin for the Second Annual DSRIP Statewide Learning Collaborative Summit. With well over 500 attendees, the summit provided an opportunity to learn about all of the great progress that has been made during the first three and half years of the Waiver. The Waiver Extension and DSRIP Protocols session was highly anticipated and provided an overview of HHSC's 5-yr Waiver extension request and a preview of a limited Draft Project Option Menu. In addition to a limited Menu we can also anticipate much less variability in metric achievement, with each project potentially limited to two to three metrics, with the bulk of achievement being dependent on QPI performance.

[CLICK HERE](#) to find some of themes of HHSC's Waiver renewal request.

## October DY4 Reporting Quick Tips

All reporting must be submitted through the DSRIP Online Reporting System no later than 11:59p.m **on October 31, 2015**. Please see the following reporting tips in the table below. This is not an exhaustive list, just some quick highlights and reminders to help you prepare. More detailed information will be shared by HHSC and the Anchor Team as it becomes available. Please do not hesitate to reach out to your Anchor Regional Liaison at [setexasrhp@harrishealth.org](mailto:setexasrhp@harrishealth.org) for questions or concerns.

**If you have not done so, please complete the DSRIP Online Reporting Tool Active User Document. This ensures that each person in your organization who needs to use the Tool has the appropriate access. As a reminder, completed documents were to be submitted to your Regional Liaison and copied to the Anchor mailbox, [setexasrhp@harrishealth.org](mailto:setexasrhp@harrishealth.org) by September 18th. The Anchor Team will compile a list of all of the updated information for our RHP 3 Performing Providers and send a final list to HHSC on behalf of the Region.**

**Need supporting documents (e.g. agendas, attendance sheets, certificates, etc.) for the Regional Learning Collaborative, Cohort Workgroups, and Monthly Calls? [CLICK HERE](#) on how to access these documents.** ◀

CATEGORY 1 AND CATEGORY 2	CATEGORY 3
<ul style="list-style-type: none"> <li>• Include Project ID, Organization Name, and date ranges of when the metric was completed on each supporting document.</li> <li>• No Patient Health Information (PHI) on any documents.</li> <li>• Acceptable file types include: Word, Excel, PowerPoint, Zip Files, (HSS will PDF all final documents).</li> <li>• Links to documents will not be accepted.</li> <li>• Make sure anything that is meant to be redacted, is actually blacked out.</li> <li>• All providers are required to complete the semi-annual progress reports for October DY4 Reporting for every project regardless of whether the milestone/metric is reported for payment in October.</li> <li>• A coversheet is required for each Cat 1 and Cat 2 project - be sure to download the most current version of the coversheet.</li> <li>• QPI metrics - make sure you have all supporting documentation.</li> <li>• Improvement over baseline metrics: be sure to show baseline information as well as the increase or total achievement stated in the goal in relevant documentation for that metric.</li> <li>• Make sure all outstanding discrepancies are resolved with HHSC or Myers and Stauffer before reporting on the respective milestone/metric - recoupment of funds is possible.</li> </ul>	<p>Please continue to check new email notifications from HHSC, Myers and Stauffer, and the Anchor Team as more information on Category 3 develops and becomes available.</p>

## Required Dates and Deadlines

**May 2015 through September 2015** - Category 3 baseline review - baseline correctness

**September 23, 2015** - Anchor sends final DSRIP Online Reporting System Active Users List to HHSC

**September 30, 2015** - Waiver Renewal Webinar - Planning and Protocols

**September 30, 2015** - 1115 Waiver Renewal/Extension Application due to CMS

**Early October** - 3-year project change request feedback expected

**October 2015 through December 2015** - Category 3 baseline review - corrective action plan, technical assistance and follow-up

**October 2015 through February 2016** - Category 1 and 2 validation - Round 1

**October 31, 2015** - DY4 DSRIP Reporting due

**December 9th** - First RHP 3 DY5 Learning Collaborative

## Regional Statewide Events

**September 16, 2015 - RHP 17** Learning Collaborative - Population Health and Outcome Measures  
Contact Shayna Spurlin: [Spurlin@sph.tamhsc.edu](mailto:Spurlin@sph.tamhsc.edu)

**September 23, 2015 - RHP 12** Regional Learning Collaborative. Contact: Bobbye Hrcirik  
[Bobbye.hrcirik@umchealthsystem.com](mailto:Bobbye.hrcirik@umchealthsystem.com)

**September 24, 2015 - RHP 9** Biannual Learning Collaborative Event. Contact Margie Roche  
[Margaret.roche@phhs.org](mailto:Margaret.roche@phhs.org)

**September 25, 2015 - RHP 2** Learning Collaborative  
Contact Susan Seidensticker: [smseiden@utmb.edu](mailto:smseiden@utmb.edu)

**September 29, 2015 - RHP 10** Learning Collaborative  
Contact Meredith Oney: [RHP\\_Region\\_10@jpshealth.org](mailto:RHP_Region_10@jpshealth.org)

\*All dates are subject to change. Please refer to HHSC for the most recent updates: <http://www.hhsc.state.tx.us/1115-Waiver-Deadlines.shtml>.