

New York DSRIP

Swathi Gurjala

DSRIP Program Manager



Bassett Healthcare Network



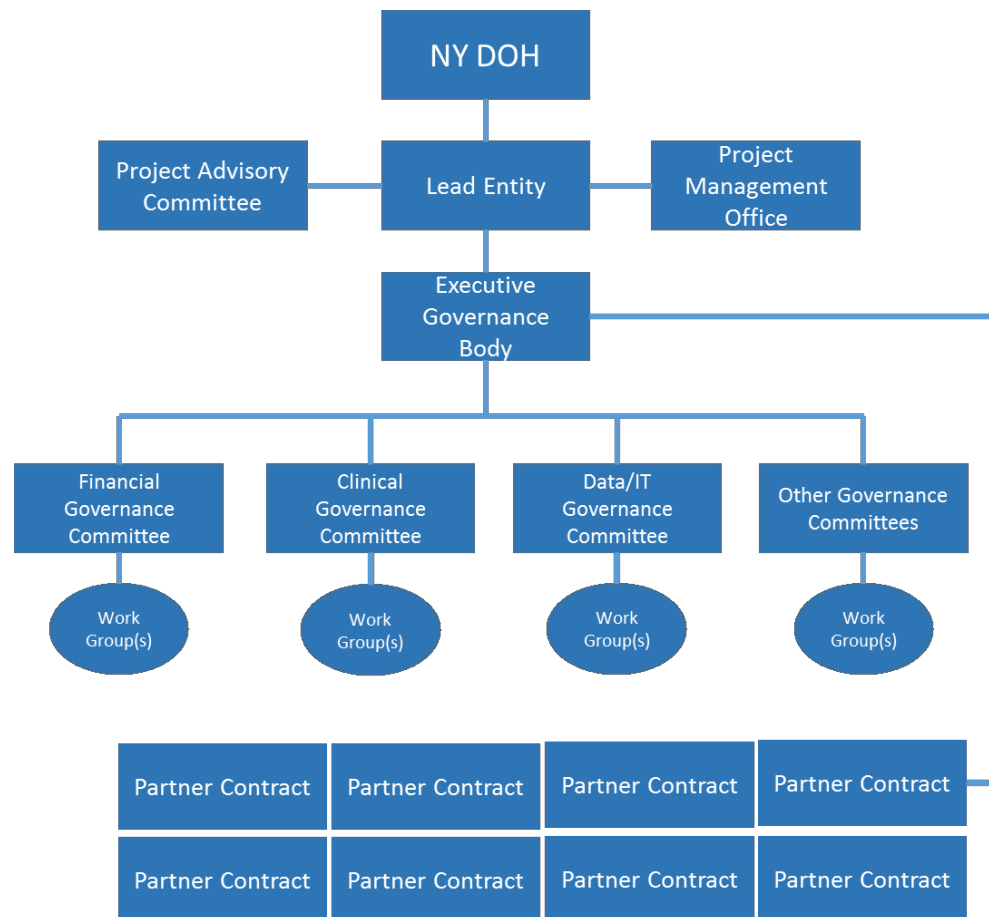


Structure of DSRIP in New York

- Performing Provider System (PPS)
- Lead of PPS
- PPSs form different types of Governance Structure
 - Collaborative Contracting Model
 - Delegated Authority Model
 - Fully Incorporated Model
- PPSs could form an ACO

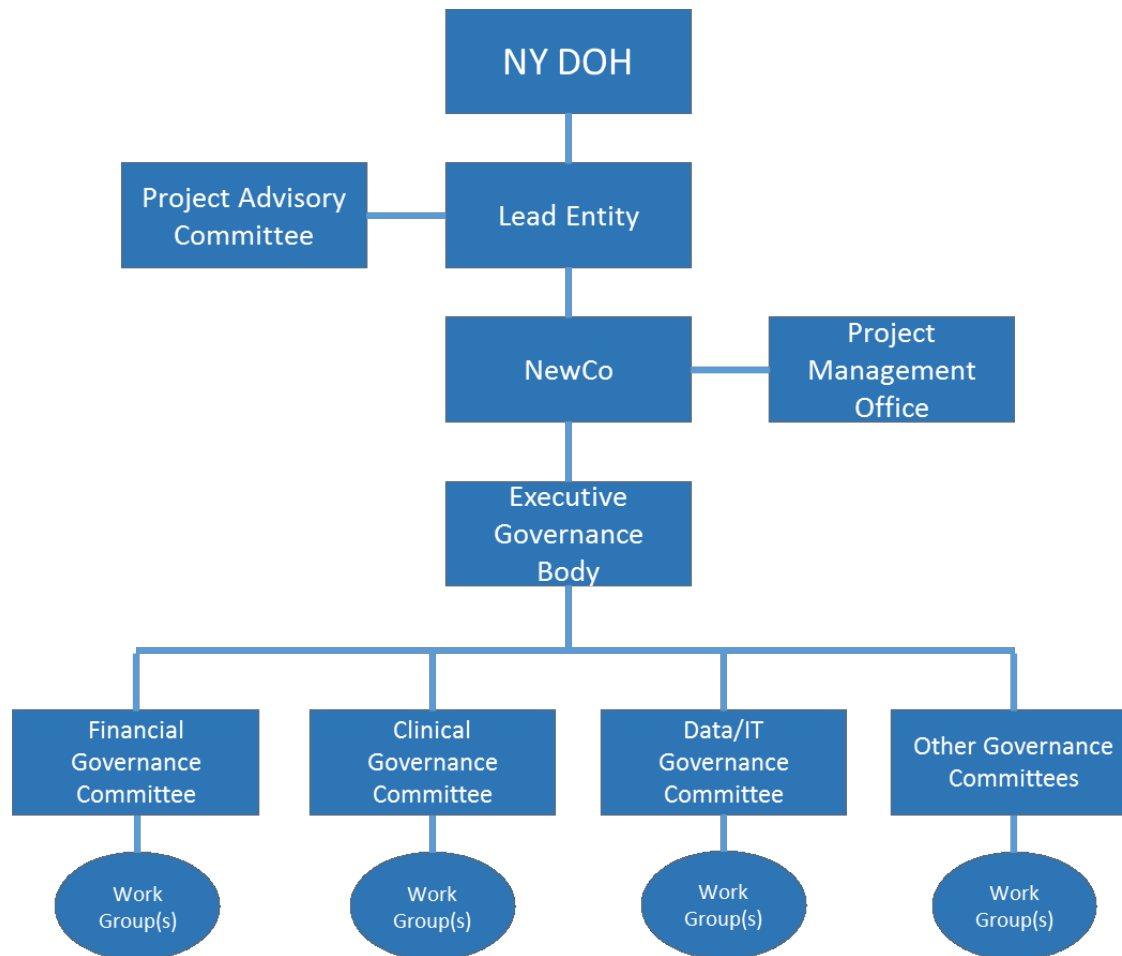


Collaborative Contracting Model



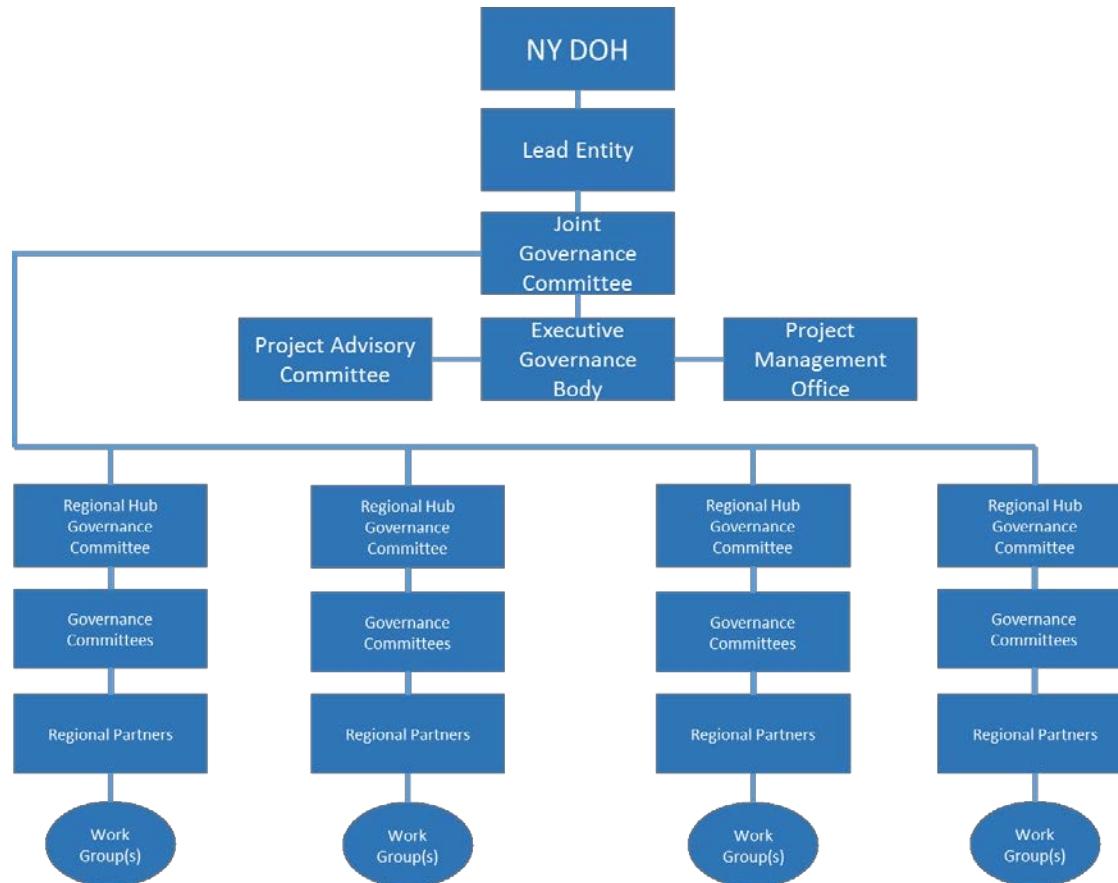


Delegated Authority Model





Fully Incorporated Model





Differences in DSRIP Programs

Texas

- 20 RHPs
- Governance by State
- Funds Flow controlled by State
- 10 projects Maximum
- Semi Annual Reporting

New York

- 25 PPSs
- Governance at State and PPS level
- Funds Flow to partners within PPS to be determined by PPS
- Unlimited Projects
- Quarterly Reporting



Challenges

- PPS Formation
- Recruitment
- Lead Agency Leadership Buy-in
- Partner Engagement
- Funds Flow Model Development
- Culture Shift



BASSETT MEDICAL CENTER PPS



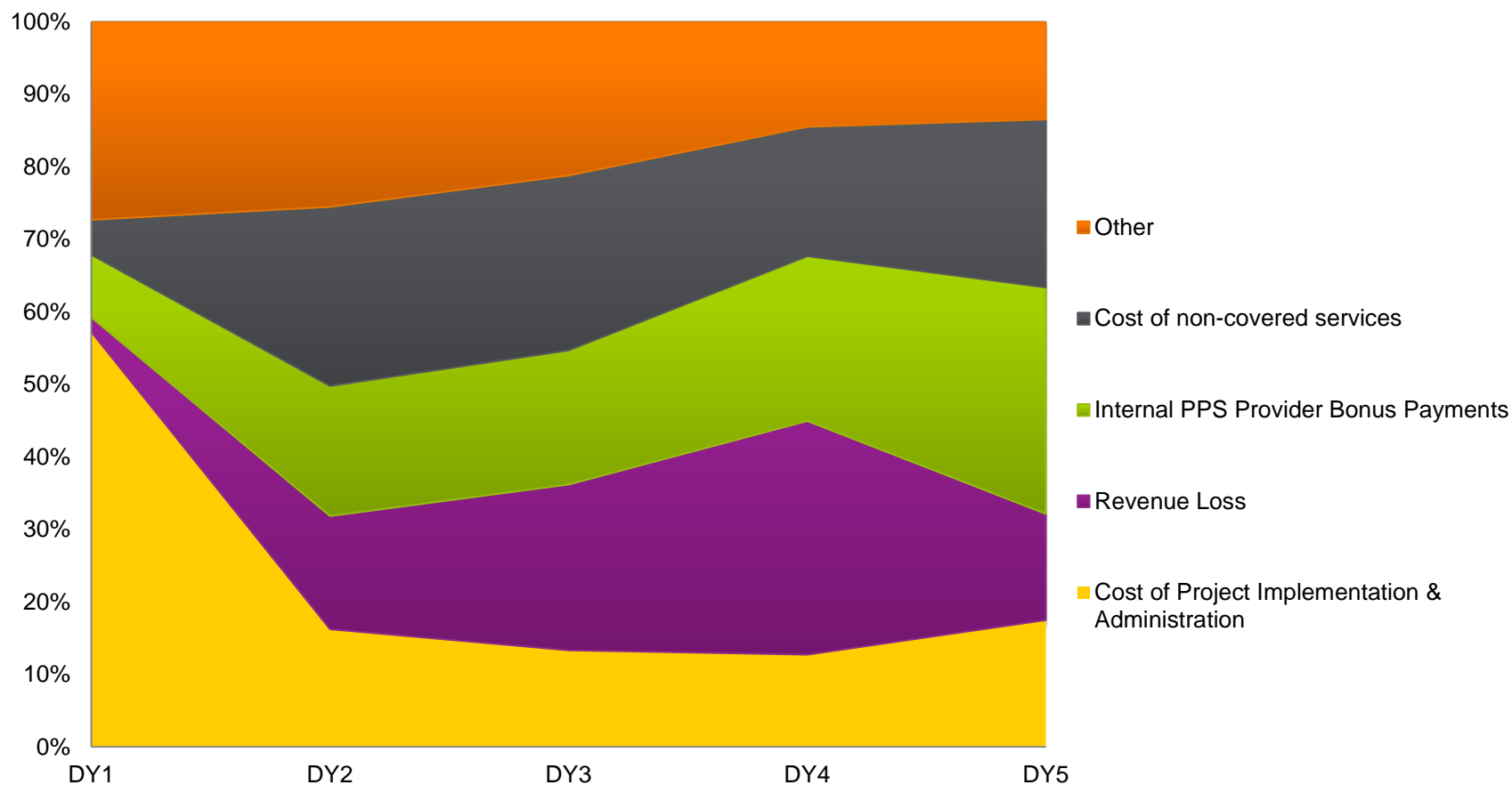


Funds Flow

Budget Category	% Allocation
Cost of Project Implementation & Administration	29%
Implementation planning	
Administration/PMO Office	
Revenue Loss	12%
ED/Inpatient loss of revenue resulting from transformation	
Internal PPS Provider Bonus Payments	37%
Provider bonus payments for meeting/exceeding metrics	
Cost of non-covered services	8%
Services that will lead to transformation & VBS	
Other	15%
Contingency (Unexpected/unanticipated occurrences within PPS)	
Sustain Fragile Providers (Support financially fragile providers in PPS who are essential to successful transformation)	
Innovation (Innovative ideas leading to greater PPS success)	



Variation in Funds Flow Over Time





Funds Flow Model – Important Points

- DSRIP is not a grant. It is a demonstration program, which is based on incentives for meeting defined metrics and project progress
- Funds will be distributed to partners, not projects
- Funds distributed to non safety net institutions cannot exceed 5% of DSRIP funds
- DSRIP funds are paid for achieving project goals, not for providing services. The Medicaid claims process must be followed to receive payment from Medicaid for services provided.
- Funds flow methodology will be developed to incentivize partners who contribute to accomplishment of milestones and metrics
- The first payment is for implementation planning & participation
- Funds flow model assumes a conservative 80% success rate in meeting metrics during the demonstration years



Next Steps

- Confirm partner participation
- Partner agreements
- Distribute First Payment
- Formalize work groups
- Implementation of Projects





THANK YOU

